

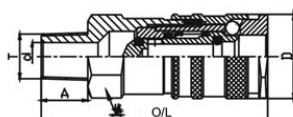
Pneumatic Quick Release Couplings

P310 Series - ISO 6150B Standard

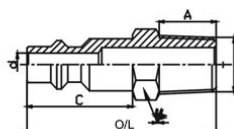


Features

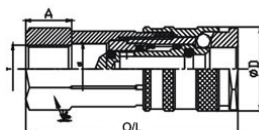
- Standard: ISO 6150B
- Sizes 1/4" - 3/8" and Barb
- Nominal flow diameter: 5.3mm
- Working pressure: 1.6 Mpa
- Carbon steel
- NBR sealing
- Corrosion resistant - CR3
- Interchange: Parker 20, Rectus 23KA, Hansen 3000, Cejn 310



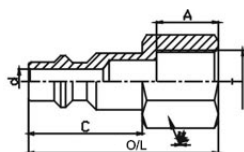
Part No.	O/L	D	Hex 1	A	T	d
P310-F-04GM	63.2	23.3	20	13	1/4	7.8
P310-F-04GM	61.2	23.3	20	13	3/8	11.3



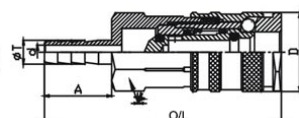
Part No.	O/L	C	Hex 1	A	T	d
P310-M-04GM	43	24	14	13	1/4	5.2
P310-M-04GM	43.5	24	17	13	3/8	5.2



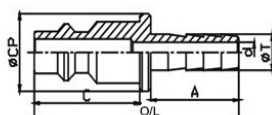
Part No.	O/L	D	Hex 1	A	T	d
P310-F-04GF	60.2	23.3	20	13	1/4	14
P310-F-04GF	60.2	23.3	20	12	3/8	14



Part No.	O/L	C	Hex 1	A	T	d
P310-M-04GF	40	24	17	13	1/4	5.2
P310-M-04GF	40	24	19	13	3/8	5.2



Part No.	O/L	D	Hex 1	A	T	d
P310-F-07B	70.2	23.3	20	20	7	4
P310-F-09B	75.2	23.3	20	25	9	5.5
P310-F-11B	75.2	23.3	20	25	11	7.5



Part No.	O/L	C	Hex 1	A	T	d
P310-M-07B	46.5	24	15	20	7	4
P310-M-09B	51.5	24	15	25	9	5.5
P310-M-11B	51.5	24	15	25	11	7.5