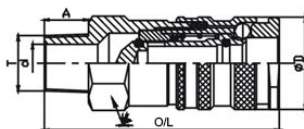


Pneumatic Quick Release Couplings

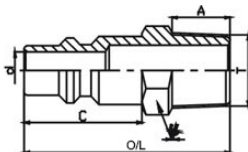
P430 Series ISO 6150B & A-A 59439 8.2 mm

Features

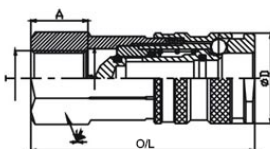
- Standard: ISO 6150B
- Sizes 3/8" & 1/2"
- Nominal flow diameter: 8.2mm
- Carbon steel
- Working pressure: 1.6 Mpa
- NBR sealing
- Corrosion resistant - CR3
- Interchange: Cejn 430



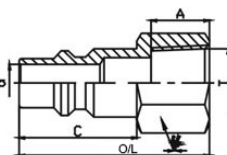
Part No.	O/L	D	Hex 1	A	T	d
P430-F-04GM	69.3	27.2	24	13	3/8	11.3
P430-F-06GM	69.8	27.2	24	16	1/2	11.3



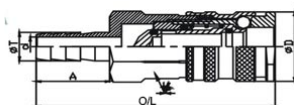
Part No.	O/L	C	Hex 1	A	T	d
P430-M-04GM	46	26.3	17	13	1/4	8.2
P430-M-06GM	51	26.3	22	16	3/8	8.2



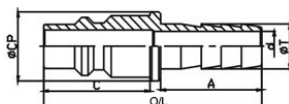
Part No.	O/L	D	Hex 1	A	T	d
P430-F-04GF	67.3	27.2	24	17.1	3/8	14
P430-F-06GF	68.3	27.2	27	16	1/2	17.9



Part No.	O/L	C	Hex 1	A	T	d
P430-M-04GF	42.5	26.3	19	13	1/4	8.2
P430-M-06GF	47	26.3	27	16	3/8	8.2



Part No.	O/L	D	Hex 1	A	T	d
P430-F-07B	81.3	27.2	24	25	11	7.5
P430-F-09B	86.3	27.2	24	30	15	10



Part No.	O/L	C	Hex 1	A	T	d
P430-M-07B	54	26.3	17	25	11	7.5
P430-M-09B	59	26.3	17	30	15	10