

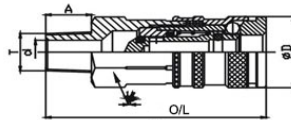
## Pneumatic Quick Release Couplings

### P300 Series - Aro 210 Standard

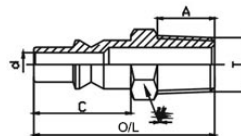


### Features

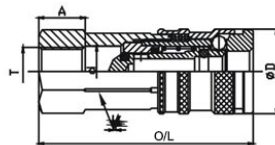
- Standard: Aro 210
- Sizes 1/4" - 3/8" and Barb
- Nominal flow diameter: 5.5mm
- Working pressure: 1.6 Mpa
- Carbon steel
- NBR sealing
- Corrosion resistant plating- CR3
- Pneumatic tools, air compressors, measuring and control equipment
- Interchange: Parker 50, Rectus 22KA, Cejn 300



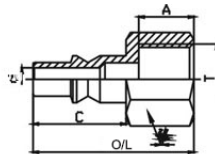
Part No.	O/L	D	Hex 1	A	T	d
P300-F-04GM	63.2	23.3	20	13	1/4	7.8
P300-F-06GM	61.2	23.3	20	13	3/8	11.3



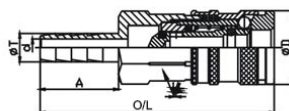
Part No.	O/L	C	Hex 1	A	T	d
P300-M-04GM	43	24	14	13	1/4	5.2
P300-M-04GM	43.5	24	17	13	3/8	5.2



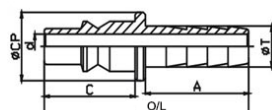
Part No.	O/L	D	Hex 1	A	T	d
P300-F-04GF	60.2	23.3	20	13	1/4	14
P300-F-06GF	60.2	23.3	22	12	3/8	14



Part No.	O/L	C	Hex 1	A	T	d
P300-M-04GF	40	24	17	13	1/4	5.2
P300-M-04GF	40	24	19	13	3/8	5.2



Part No.	O/L	D	Hex 1	A	T	d
P300-F-07B	70.2	23.3	20	20	7	4
P300-F-09B	75.2	23.3	20	25	9	5.5
P300-F-11B	75.2	23.3	20	25	11	7.5



Part No.	O/L	C	Hex 1	A	T	d
P300-M-07B	46.5	24	15	20	7	4
P300-M-09B	51.5	24	15	25	9	5.5
P300-M-11B	51.5	24	15	25	11	7.5